

A truly global challenge

Water risk was ranked as the third highest impact risk in the World Economic Forum's 2016 Global Risk report. At least three of the study's top 10 risks are directly related to water

WORLD ECONOMIC FORUM



Margareta Drzeniek-Hanouz, director and lead economist of the World Economic Forum's Global Competitiveness and Benchmarking Network

"The issues are so big that they cannot be resolved by the business sector or the political sector alone," She added: "The report's overarching recommendation is for public-private collaboration."



Global trends - local impacts

The UK Climate Projections suggest climate will cause sea levels to rise between 20cm and 69cm by the 2080's.



Our population is set to grow by 20% by 2040

In the UK, 75,000 ha of high-quality horticultural and arable land is likely to be flooded at least once every 3 years by the 2050s



In 2012, Anglian area received 153% of the long-term average rainfall following a record drought.

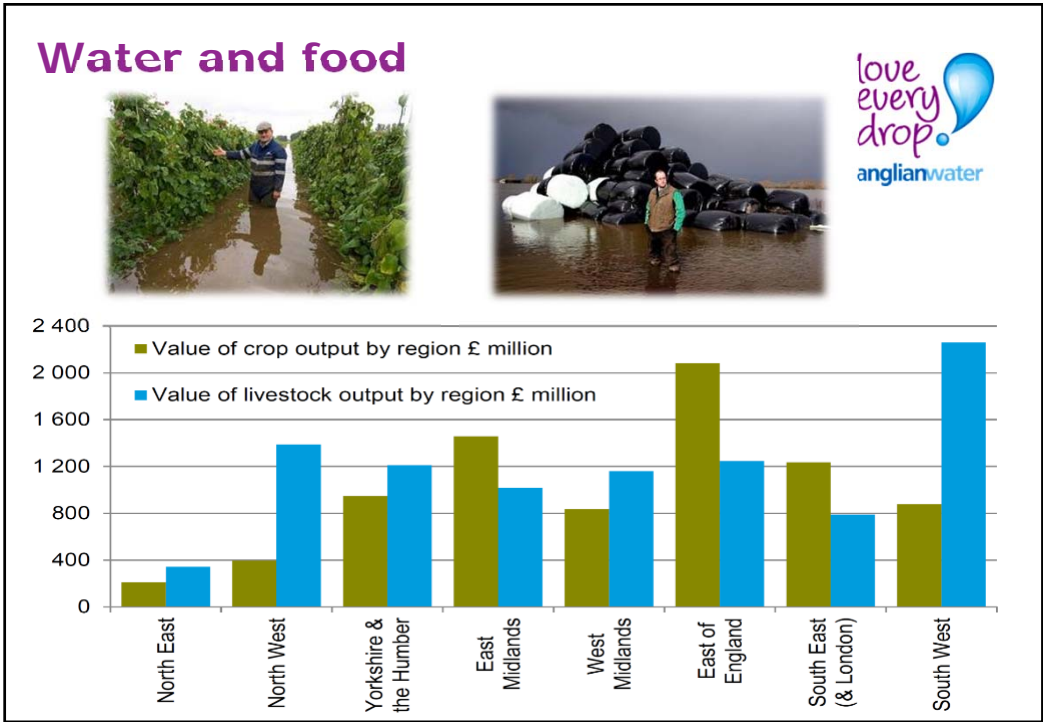
In the last five years, this region has seen the driest periods ever recorded

Total energy resource potential of east of England is 264% of predicted 2020 energy demand


Average cost of disruption due to flooding is circa £2bn a year in the UK.

More focus on collaborative flood risk management through new devolved administrations

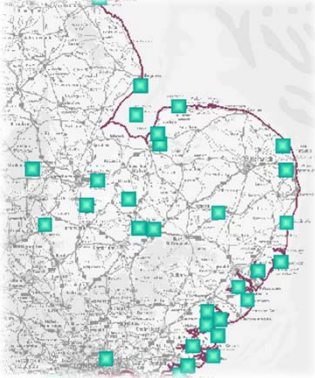





Water and our local environment



The Broads National Park



Wetlands of international importance



Protecting our environment







Challenges – drought to deluge



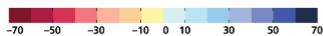
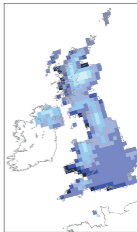
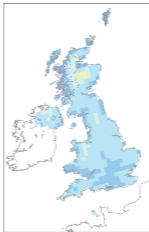
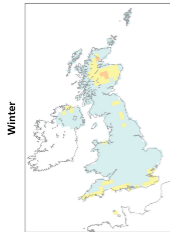
The precipitation of the future



10% probability level
Very unlikely to be less than

50% probability level
Central estimate

90% probability level
Very unlikely to be greater than



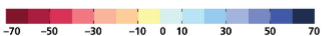
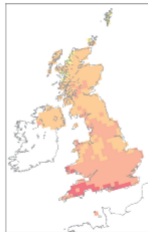
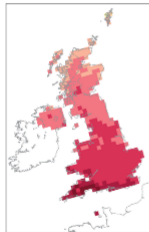
Change in winter mean precipitation (%) for the 2080s, Medium emissions scenario



10% probability level
Very unlikely to be less than

50% probability level
Central estimate

90% probability level
Very unlikely to be greater than



Change in summer mean precipitation (%) for the 2080s, Medium emissions scenario

Planning for our future

DISCOVER
DISCUSS
DECIDE

OUR PLAN
2015 TO 2020

LOVE EVERY DROP
PUT WATER AT
THE HEART
OF A WHOLE NEW
WAY OF LIVING

TRANSFORMATION

OUR PLAN 2015-20
Representations on the Draft Determination
October 2014

LOVE EVERY DROP
PUT WATER AT
THE HEART
OF A WHOLE NEW
WAY OF LIVING

TRANSFORMATION

love every drop
anglianwater

THIS PLAN IS
BALANCED AND
AFFORDABLE
BECAUSE...

Anglian Water - Our Plan

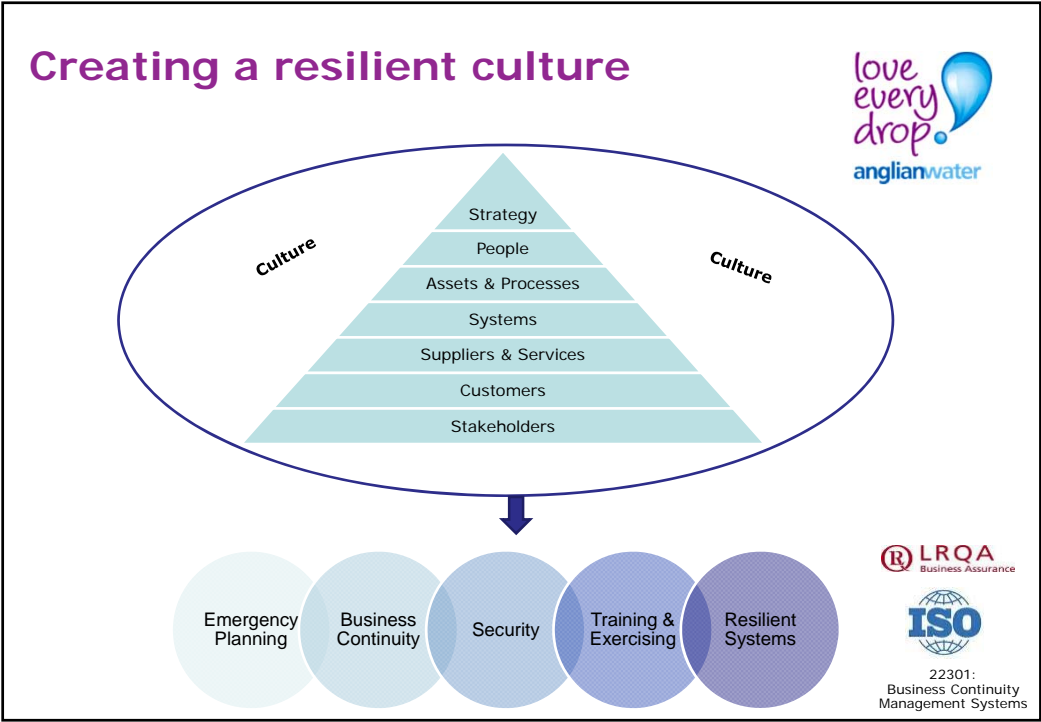
HELP DECIDE THE FUTURE OF YOUR
WATER AND WASTEWATER SERVICES

OUR PLAN
2015 TO 2020

We'll drive
leakage down

Anglian Water - Our Plan





Partnership Working – Partnership Funding





Can catchment management work?









Managing a catchment together

- Black Sluice





love every drop

anglianwater



OUR PLUGHOLES AND TOILET BOWLS ARE FOR USED WATER, NOT RUBBISH

THOUSANDS OF BLOCKAGES A YEAR ARE CAUSED BY ITEMS THAT SHOULD NEVER BE PUT DOWN SINKS AND TOILETS
HELP PROTECT OUR RIVERS, WILDLIFE AND THE ENVIRONMENT



FACT!
A BABY, BY THE TIME IT IS 2 YEARS OLD, USES 4380 NAPPIES AND 17,020 WIPES
Based on an average of 4 nappies a day and 4.5 wips per happy change!

FACT!
THERE ARE 20,000 TONNES OF USED FATS, OILS AND GREASE IN ANGLIAN WATER SEWERS AT ANY ONE TIME. THAT'S ENOUGH TO FILL EIGHT OLYMPIC SIZED SWIMMING POOLS!

WHAT HAPPENS WHEN OUR NEIGHBOURHOOD ARTERIES GET BLOCKED

KEEP IT CLEAR

NEVER PUT FAT, OIL OR FOOD SCRAPS DOWN THE LIND OR LOO. THEY SHOULD BE RECYCLED AT HOME, TAKEN TO A HOUSEHOLD WASTE RECYCLING CENTRE OR BURNED INCINERATING ON WHERE YOU LIVE.

PUT SANITARY WASTE HERE TO KEEP PIPES CLEAR
FATS AND TAMPONS GO IN THE BIN, NOT DOWN THE LOO

RECYCLE OIL AND FAT TODAY TO HELP PREVENT BLOCKAGES
NEVER PUT FAT, OIL OR FOOD SCRAPS DOWN THE LIND OR LOO. THEY SHOULD BE RECYCLED AT HOME, TAKEN TO A HOUSEHOLD WASTE RECYCLING CENTRE OR BURNED INCINERATING ON WHERE YOU LIVE.


KEEP RUBBISH OUT OF THE DRAINS TO PREVENT BLOCKAGES, SEWER FLOODING AND NASTY SMELLS
LEARN MORE AT www.keep-it-clear.co.uk

RINSE YOUR WIPES TO AVOID BLOCKED PIPES
SURFACE, MAKE-UP, CLEANSING AND BABY WIPES SHOULD BE RINSED, NOT FLUSHED

Case Study: Wisbech 2020







Alone we can do so little;
together we can achieve so much.

- Helen Keller





**Thank You.
Any Questions?**