

ADA Local Authority Seminar

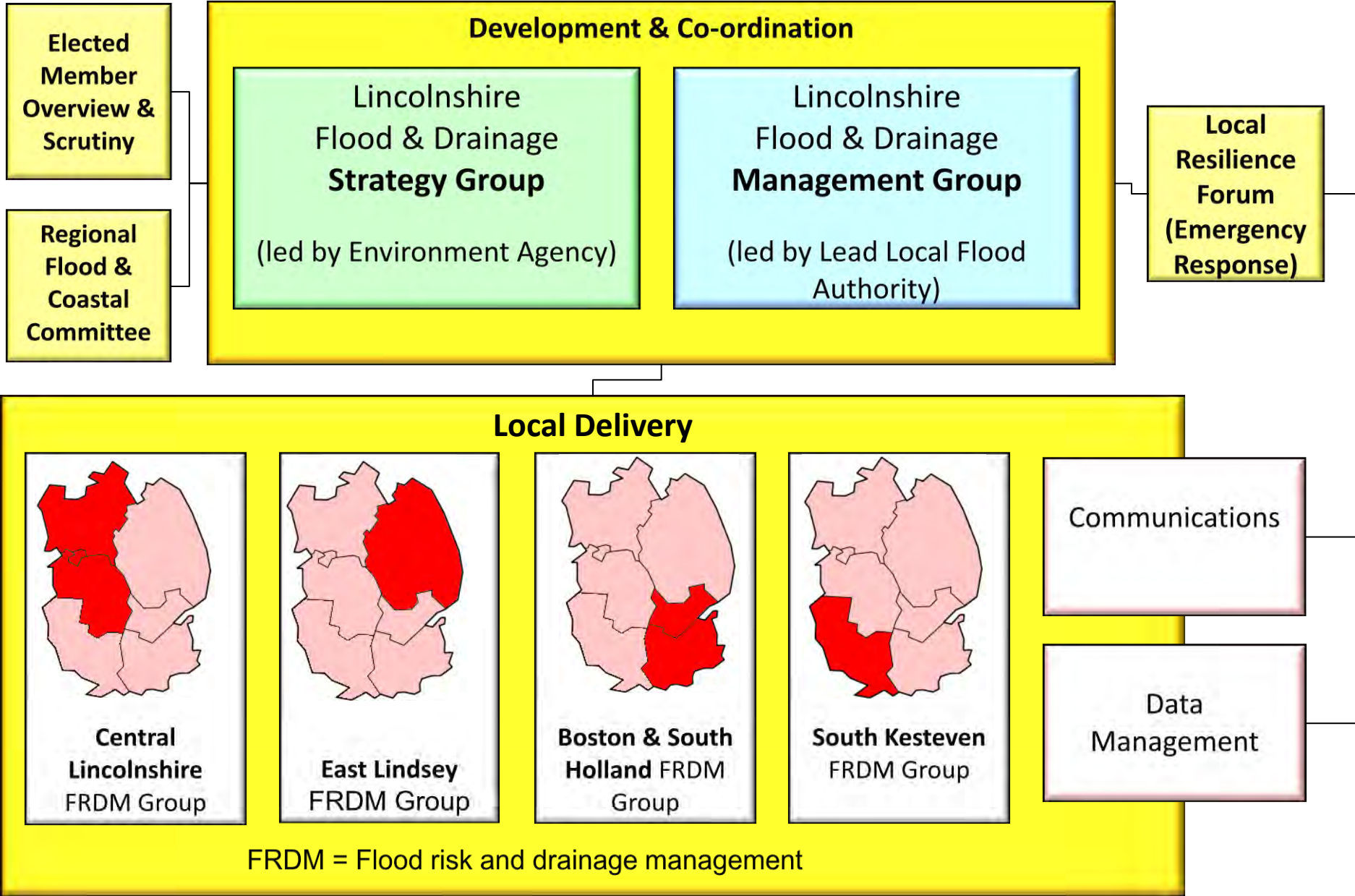
Flood Risk and Water Resources
Developing Lincolnshire's Flood Risk
Partnership

Changes in Direction

- Flood defence becomes risk management
- Sustainability, biodiversity, amenity
- Managing water as a resource

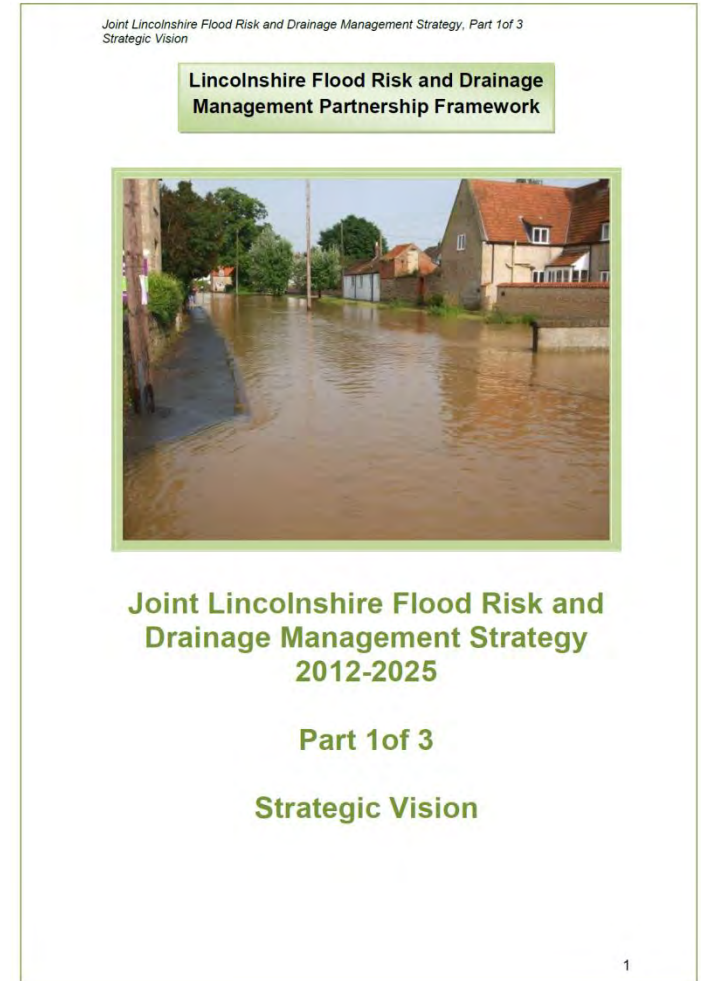


Creating a partnership is one thing...



...embedding partnership takes persistence!

- Joint vision
- All sources
- Flood risk, drainage & emergency planning
- Common works programme



Public visibility & accountability

http://stratus.lincolnshire.gov.uk/llfapublic/map.ht Register of Lincolnshire assets ... Lincolnshire Lead Local Flo...

File Edit View Favorites Tools Help

Lincolnshire
COUNTY COUNCIL

- Aqueducts
- Bridges
- Gauging Stations
- Inlets
- Outfalls
- Locks
- Sluices/Siphons/Flap Valves
- Stoplogs
- Weirs
- Manholes
- Pumping Stations - IDB/EA
- Pumping Stations - Water Companies
- Sewage Treatment Works
- Screens
- Subways
- Tunnels
- Retaining Walls
- Flood Barriers
- Flood Defences
- Sea Defences
- Raised Embankments
- Flood Storage Areas
- Reservoirs
- Open Channels
- Drains
- Canals
- Culverts
- Culverts/Pipes

<< Back to Search

The map displays the Lincolnshire region, including areas like New Boultham, Canwick, and Washingborough. It features a network of infrastructure assets represented by various colored lines and symbols. Key locations include HM Prison, Greetwell Hall, and the Spires and Steeples Trail. The map is overlaid with a grid and includes a search bar and navigation controls.

14:38
25/06/2013



**Better co-ordinated
use of resources**

Joint working

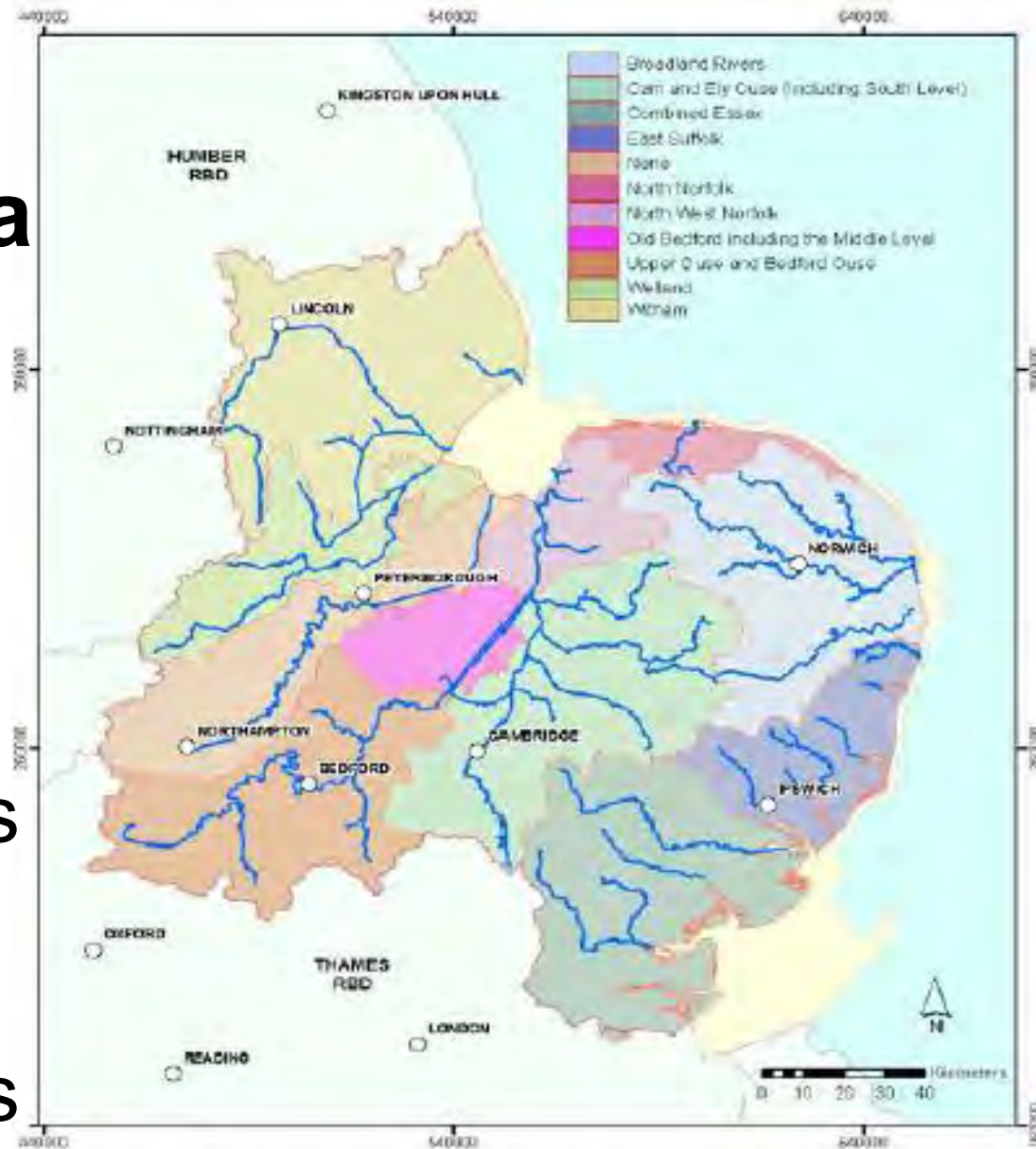
**Delegation between
authorities**

**Alignment of
operations**

More ambitious goals

A broader agenda

- Water Framework Directive
- River Basin Management Plans
- Flood Risk Management Plans
- SuDS



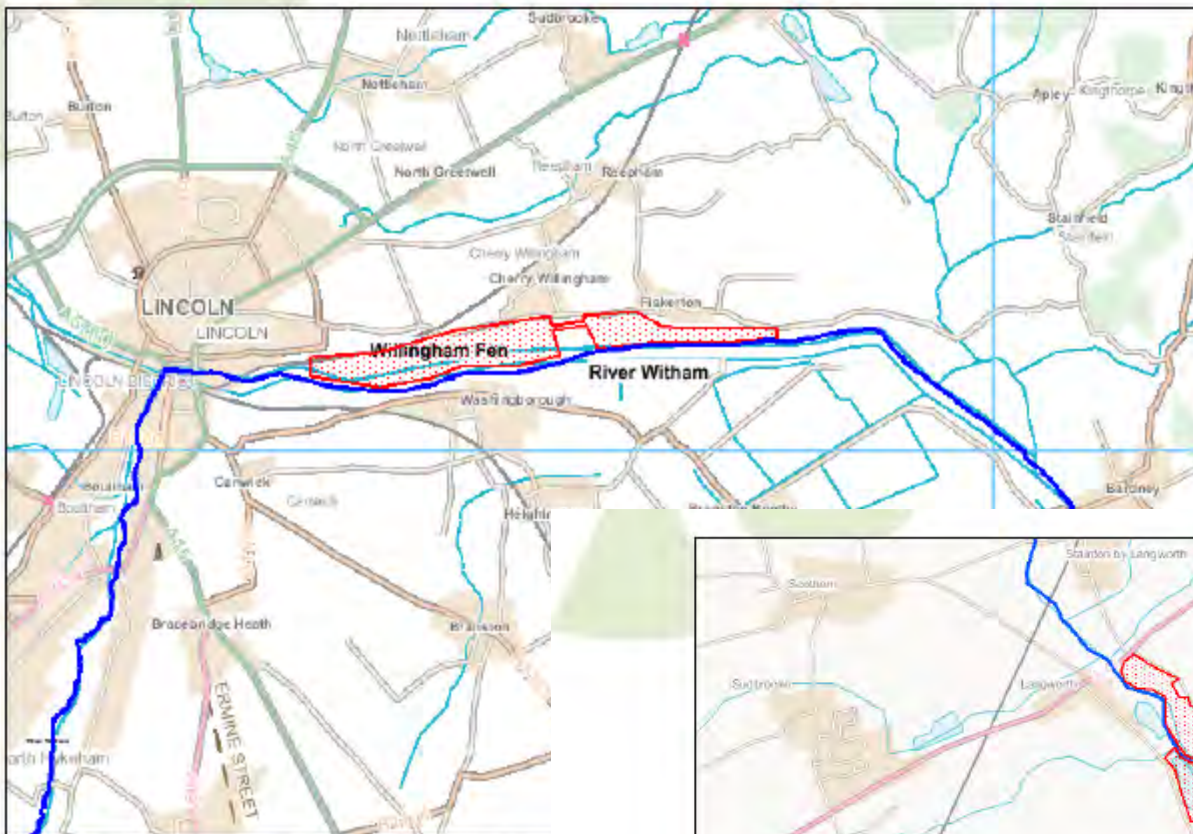
All rights reserved. Environment Agency, 100026380. [2008].
Based on information supplied by the Centre for Ecology and
Hydrology © NERC. Based on information supplied by British
Geological Survey © NERC. Based on information supplied
by UK Hydrographic Office © Crown Copyright.
© Environment Agency All rights reserved.

Date produced 05/11/05

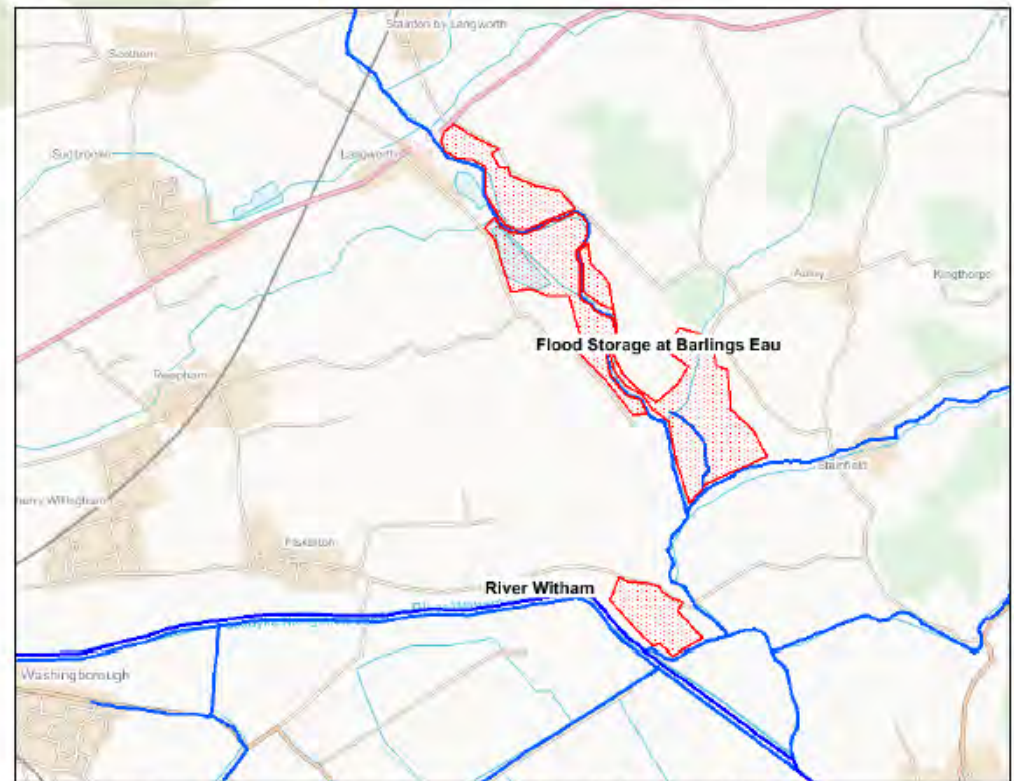
- RBD Boundaries
- Catchment Boundaries
- Main Rivers
- Main Towns

Multiple Benefits

- Flood risk
- Amenity
- Tourism economy
- Biodiversity
- Water resources



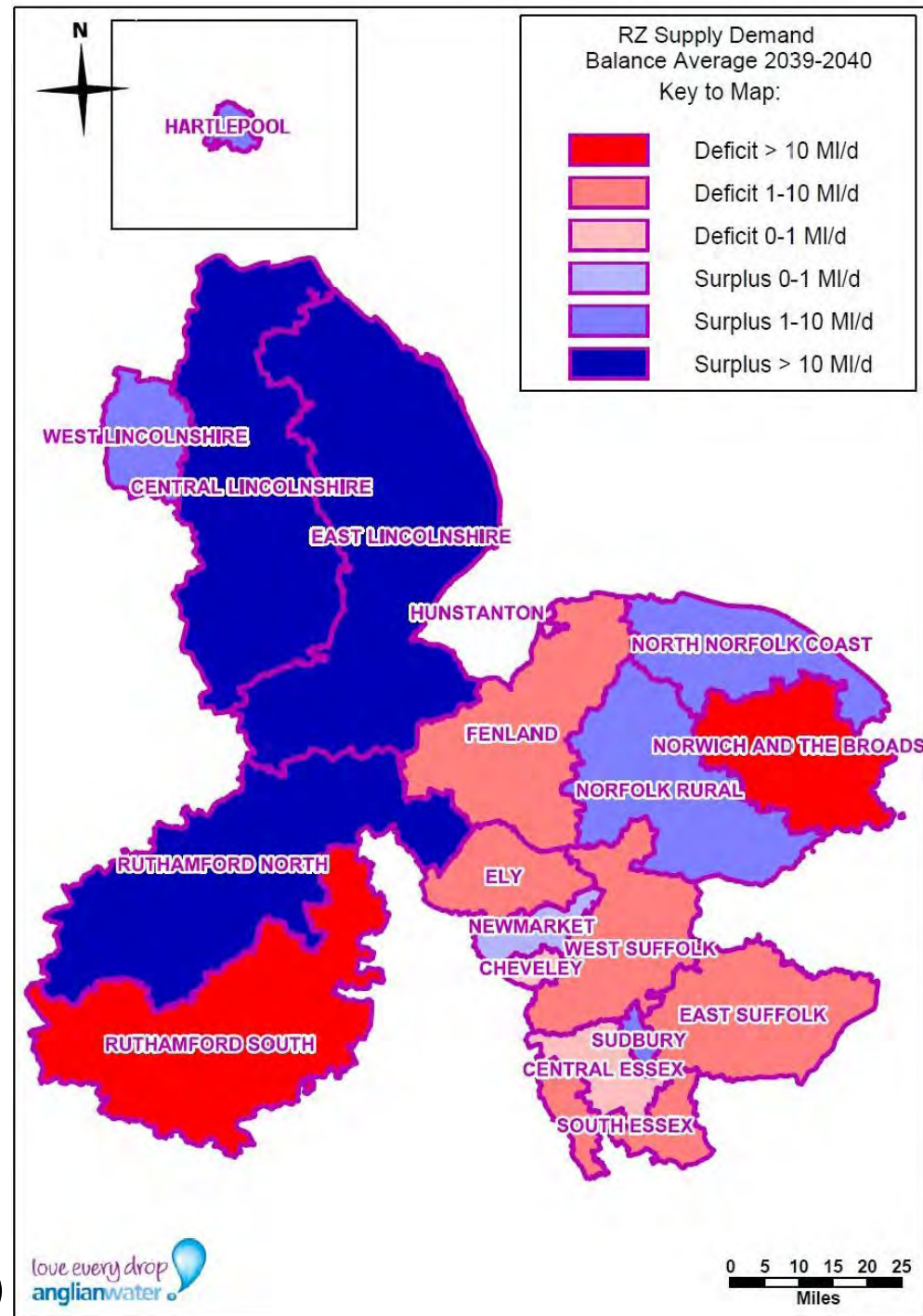
Contains Ordnance Survey data © Crown cop
This map is intended to illustrate the Willingham Fen opportu



Contains Ordnance Survey data © Crown copyright and database right 2013
This map is intended to illustrate the Flood storage at Barlings Eau opportunity to aid discussion. It does not identify any actual or planned scheme.

Planning for change

- Water availability
- Too much - too little - wrong place
- Planning for future change
- Fens – 50% of grade 1 land
- Depend on pumping out – but future availability?
- Need capacity to manage across the drought/flood cycle



Water – an economic, social & environmental resource

- Flood risk management as a social, economic & environmental enabler
- A vital part of Lincolnshire's economy
- Unlocks potential contribution to UK economy



Defining the opportunity

- Economic Growth Strategy
- Integrated water management – contributes to UK Plc
- Local Growth Fund
- Collaboration across LEPs
- Freedoms & flexibilities with Government
- LEP Water Management Plan locally

