



# Partnership Approach to Catchment Management

Greg Smith, EA  
David Sisson, ADA

17<sup>th</sup> May 2017

Sponsored by Anglian Northern Regional Flood and Coastal Committee



## What triggered this project?



- Concern about Underfunded Systems from Workshop in December 2015
- Anglian RFCC
- Growing understanding and movement towards Catchment Approach as best practice
- Promote Partnership Working and build on existing Partnerships
- Need for a Maintenance driven approach that considers wider objectives of the catchment

2



## What is the aim of the PACM project?



**A Partnership Approach to Catchment Management**  
Briefing Note  
October 2016

To embed a catchment based approach to the management of systems, and develop the long-term maintenance programmes in line with that, focusing on efficiencies and aligning the objectives of the Risk Management Authorities (RMAs) and other local delivery partners.

**Why?**  
In October 2015, the English Northern Water (ENW) raised significant concerns over watercourse systems that, following the 2015/16 winter floods, raised the need for 'catchment' for Flood and Coastal Risk Management funding. Following a workshop in October 2015, the PACM group was formed to understand other options for these systems. Despite the additional maintenance funding from Government in 2015, there is still a need to address unbanked systems, and efficiencies and develop a sustainable, focused look for asset management in the area. Asset management is the key driver, but also alignment with flood risk and environmental benefits by working and embedding catchment management principles.

**What?**  
A framework of assistance for RMAs and other local delivery partners in order to deliver a partnership approach to catchment management on a catchment scale, and how to apply this in practice. The book focuses on all issues relevant to the management and management of water in a

*To embed a catchment based approach to the management of systems, and develop the long-term maintenance programmes focusing on efficiencies and aligning the objectives of the Risk Management Authorities (RMAs) and other local delivery partners.*



## Why is this work important?

- Ensures meaningful engagement with partners and catchment stakeholders
- Provides a solution to securing resources for maintenance
- Identifies Catchment Objectives, how these can be delivered and who is best placed to do the work
- Develops efficiencies to help ensure a sustainable approach to Catchment Management
- Provides evidence to support new innovative approaches for Catchment Management



## How is this to be achieved?

- Development of a joint approach through the PACM Working Group
- Understanding partnership management options
- Creation of an operations-focused assessment package

### Phase 1: January 2016 to March 2017

- Development of Guidance Document & Assessment Tool
- Identify Pilot Catchments to test the tool

### Phase 2: April 2017 to March 2018

- Testing of the tool through Pilot Catchments
- Finalise Guidance Document & Assessment Tool based on outcomes

### Phase 3: April 2018 onwards

- Implement the PACM across the area
- Share outcomes with Defra and partners

5

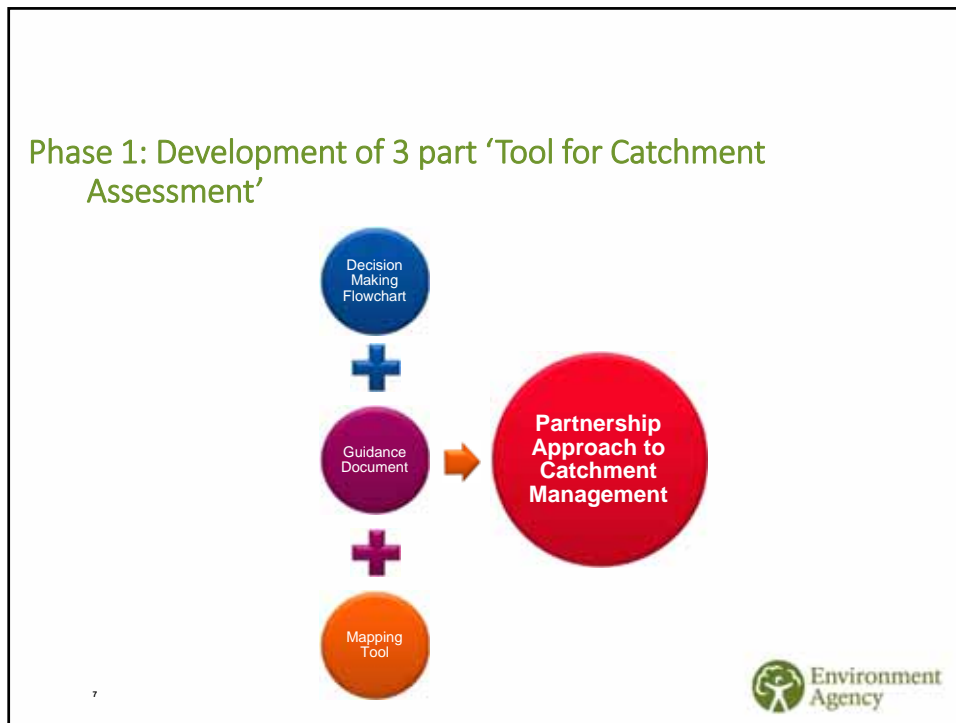


## PACM Project: Catchment Boundaries

- Ancholme (0)
- Brampton Branch (1)
- East and West Fens (2)
- Glens (3)
- Isle (4)
- Nene Lower (5)
- Welland Lower (6)
- Witham Lower (7)
- Nene Middle (8)
- North Becka (9)
- South Forty Foot Drain (10)
- Steeping and Ewas (11)
- Nene Upper (12)
- Welland Upper (13)
- Witham Upper (14)
- Willow Brook (15)

6





### Guidance Document

Pulls together the approach into a simple quick guide document.

Steers catchment groups to ensure all aspects are considered and an informed decision is reached and supported

8

## Guidance Document

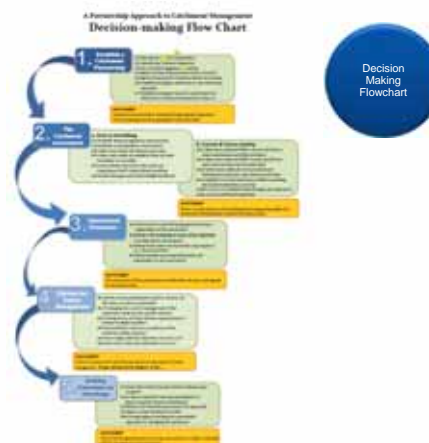
The slide displays a preview of a guidance document with several sections:

- Introduction:** A text-heavy section with a map of a catchment area.
- Why Catch the Assessment:** A section with a circular diagram showing a process flow.
- What to Expect:** A list of bullet points:
  - Each catchment is unique, therefore this tool provides a foundation for assessment, but the outcomes and catchment options will vary across catchments.
  - Accept limitations: Ensure you understand reasonable and unreasonable influences, and account for them where possible throughout the assessment.
  - Engagement and effective communication is key to success: Involve all stakeholders in the catchment and develop a positive relationship from the start.
  - Remember things change: policies, the assessment methodology, objectives or change making reasons of the assessment and approach needed both in the short and long term.
- Lessons Learnt:** A section with a bullet point:
  - From the papers still to which they are coming and after completion.

A green arrow points from the 'Why Catch the Assessment' section towards the 'What to Expect' section. A purple circle in the top right corner contains the text 'Guidance Document'. The Environment Agency logo is in the bottom right corner.

## Decision Making Flow Chart

- Provides logical progression within the Catchment
- Provides focus for collection of information and highlights desired outcomes and outputs
- Emphasises the requirement for Partnership agreement and ensures all parties are involved




# 1

## Establish a Catchment Partnership

- 1.1 Identify all relevant stakeholders
- 1.2 Set up initial engagement meeting & ask to identify own objectives
- 1.3 Agree membership, governance structure and TORs
- 1.4 Identify key 'Delivery Objectives'
- 1.5 Establish and agree catchment or sub-catchment approach
- 1.6 Agree timescales for implementation and review
- 1.7 Establish and agree resource requirements to deliver the 'Catchment Assessment' (Step 2)

**OUTCOME**  
 Catchment Partnership is established with approved 'Delivery Objectives', membership, governance, geography, timescales and resource.



11

# 2.

## The Catchment Assessment


**A. Data & Modelling**

- 2.1 Establish National legislative requirements
- 2.2 Establish Local legislative requirements
- 2.3 Collect & collate all relevant asset management data
- 2.4 Collect & collate all available flood risk data (modelled or recorded)
- 2.5 Collect & collate Water Resources data, land use mapping and WFD related data/modelling
- 2.6 Review data gaps and acknowledge limitations
- 2.7 Establish current standards of service for all sources

**B. Current & Future Activity**

- 2.8 Collect and collate all RMA's current and future asset maintenance activities and plans
- 2.9 Collect and collate all RMA's current and future asset improvement and renewal plans
- 2.10 Collect and collate all environmental and biodiversity protection and enhancement plans
- 2.11 Establish if current and future activity is meeting all required objectives.
- 2.12 If no to 2.11, establish what changes are required to meet current catchment objectives

**OUTCOME?**  
 There is a clear understanding of activity within the catchment including past, present and future plans and how they contribute to the delivery of the approved objectives.




12

6

## 3. Operational Economics

- 3.1** How much is currently being spent by the key stakeholders of the catchment?
- 3.2** What is this achieving in terms of the objectives (considering the timescales)?
- 3.3** What future plans are there that may impact (+ or -) the economics?
- 3.4** What benefits are being delivered by all stakeholders in the catchment?
- 3.5** What are the funding options?


**OUTCOME?**  
The economics of the catchment are defined for all users and agreed by the partnership.



## 4. Options for Future Management

- 4.1** Decide on broad catchment options: Do less, do the same, do more, combination
- 4.2** If changing the current management of the catchment, what are the specific options?
- 4.3** If doing more, are there further opportunities to achieve multiple benefits?
- 4.4** Partnership to come to a consensus on the preferred, viable option(s)
- 4.5** Does it align with the objectives set out in 1.2?
- 4.6** Is the option viable and sustainable in terms of funding, resource, time etc.?


**OUTCOME?**  
There is consensus from all of the partnership on the option for future management. If yes, move on to Step 5. If there is not consensus, aim to resolve issues separately whilst seeking to implement interim measures.



## 5. Seeking Consensus on Next Steps

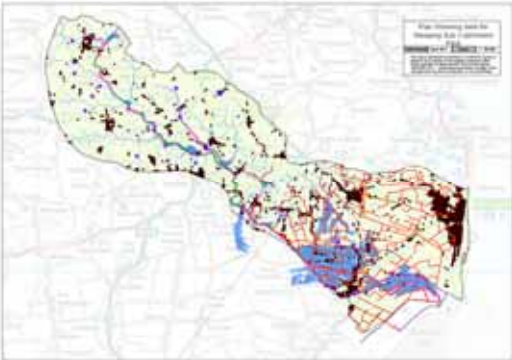
- 5.1 What is the formal/statutory process for approval?
- 5.2 Is there a need for informal consultation? Is there a need for formal consultation?
- 5.3 Do there need to be any interim measures put in place?
- 5.4 Formally agree in writing the partnership approach to managing the catchment
- 5.5 Agree a clear timeline for review


**OUTCOME?**  
There is formal agreement from all of the partnership for a viable, sustainable plan for management of the catchment.



15

## Mapping Tool






The Mapping Tool uses GIS to record Partners data

Visually shows how the catchment works

Powerful tool for interrogating large volumes of data



16



## Mapping Tool



The data can then be simplified into Info Graphics providing a summary of the results as shown here.



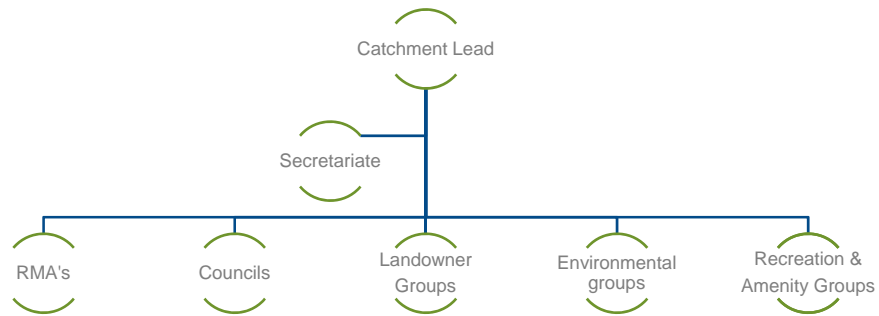
## Phase 2: Testing the Tools

The following pilot areas have been selected:

1. Ancholme
2. Upper Witham
3. Lymn and Steeping
4. Morton's Leam in the Lower Nene
5. Harpers Brook in the Middle Nene



## Pilot Catchment Partnership Structure



## Pilot Catchment – Morton’s Leam, Lower Nene



Catchment Lead:



Members:

RSPB	Natural England	Environment Agency
Cambridgeshire CC	Peterborough CC	Fenland District Council
Whittlesey Town Council	NFU	Froglife
Buglife	Whittlesey Wildfowling and Conservationists	Tydd Angling Club

## Pilot Catchment – Lymn and Steeping



**Catchment Lead:**



**Members: Initial List**

Lindsey Marsh Drainage Board	Anglian Water	Environment Agency
Lincolnshire County Council	East Lindsey District Council	Parish and Town Councils
Network Rail	Lincolnshire Chalk Streams	Lincolnshire Wildlife Trust
Wild Trout Trust	NFU	

## Next Steps

- Continue to work on the Pilot Projects
- Update Guidance document and edit 'Hints and Tips' and 'Lessons Learnt' from Pilot Feedback
- Develop and Understand how PACM fits with other Catchment Partnership groups
- Promote the PACM approach to a wider area and audience and identify where additional guidance is required

## Any Questions ?

David Sisson - [david.sisson@lmbd.co.uk](mailto:david.sisson@lmbd.co.uk)

Greg Smith – [greg.smith1@environment-agency.gov.uk](mailto:greg.smith1@environment-agency.gov.uk)



Lincolnshire  
COUNTY COUNCIL



23

