

KEEPING OUR RIVERS FLOWING

SUMMIT HOSTED BY

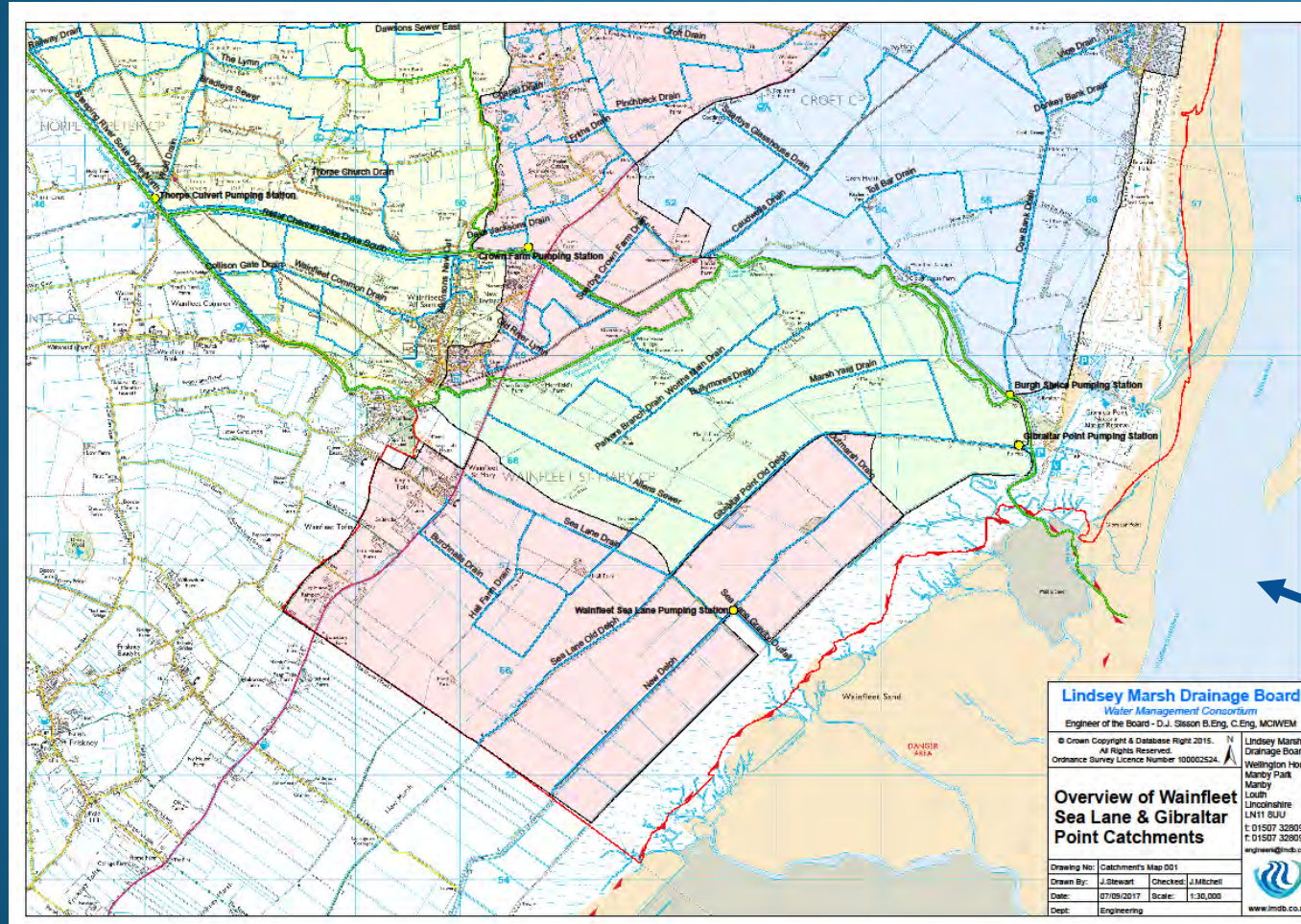
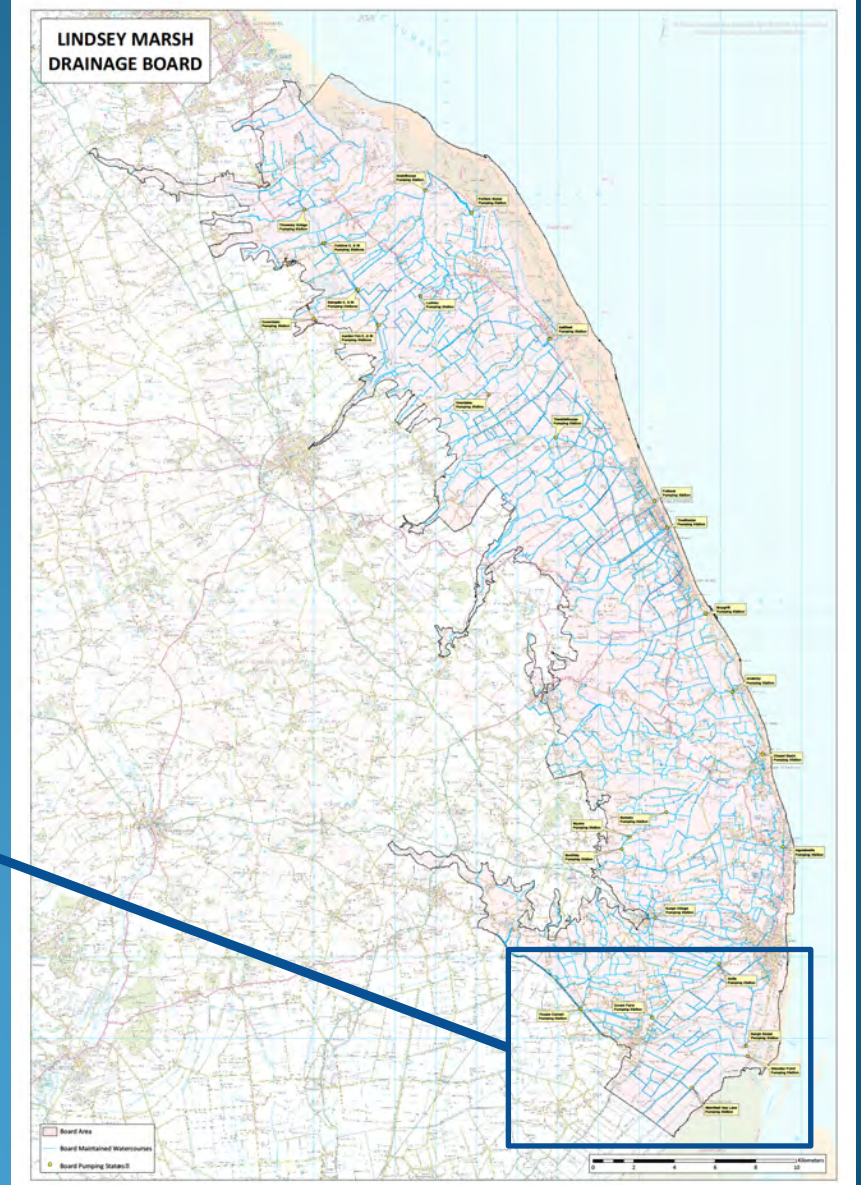




Lindsey Marsh Drainage Board

**Keeping our Rivers Flowing
- Steeping River**

Where are we?



What happened?



Impact?

- 600 homes evacuated
- 75 flooded internally
- 2,000 acres of agricultural land under water at harvest time
- Psychological impact
- Insurance claims / uninsurable
- What cost?

Preventable?

What happened next?

Catchment Steering Group

- Catchment Resilience
- Communications and Engagement
- Funding and Benefit

Themes

Improving flow through the
system

A resilient community and
infrastructure

Strengthening and
maintaining defences

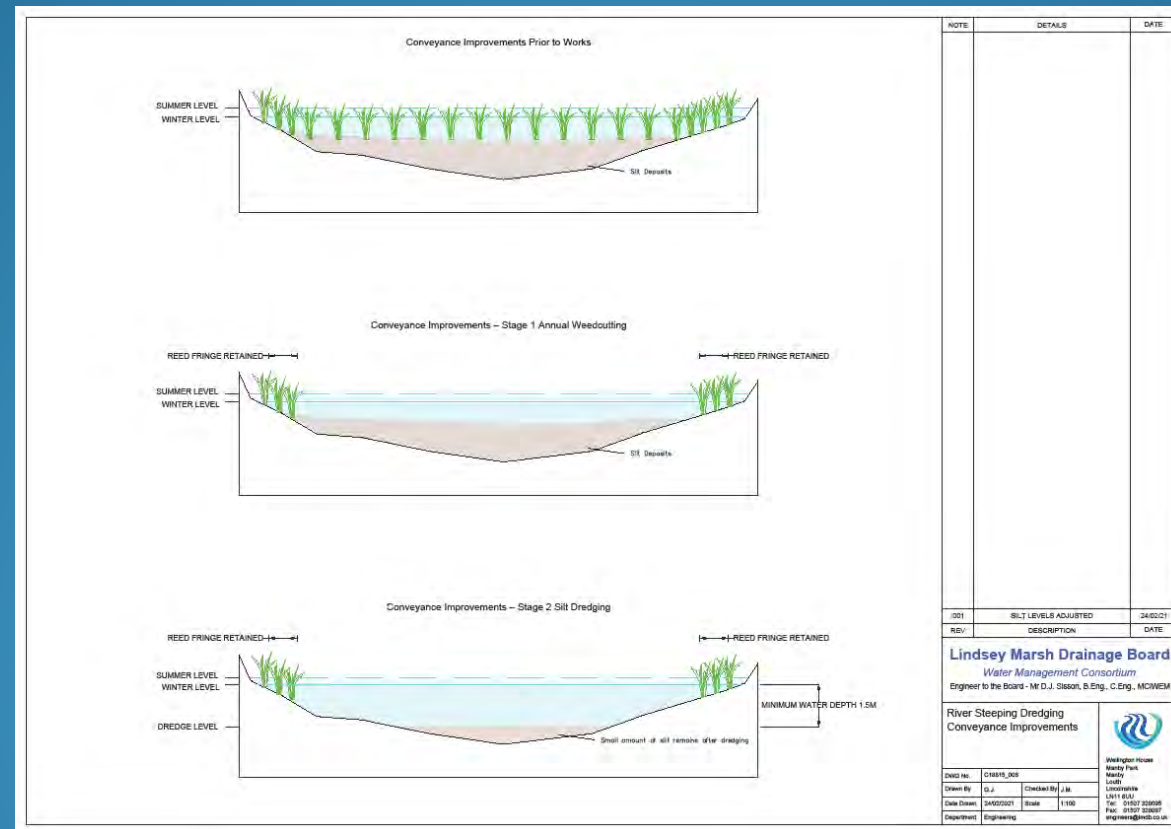
Flood water storage

Partnership Funding

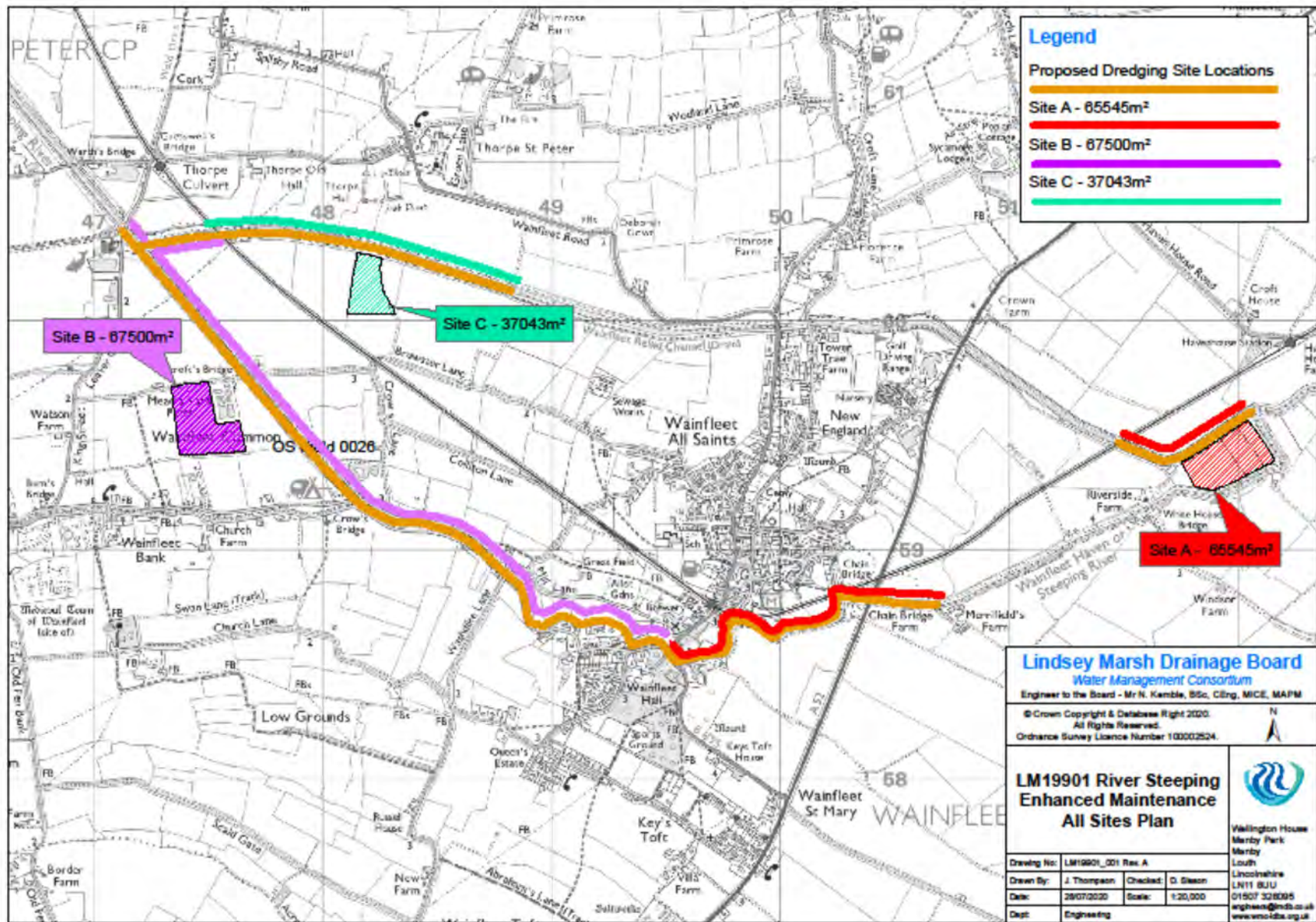
- LMDB £250,000
- EA £625,000
- LCC £150,000
- RFCC £60,000
- ELDC £50,000
- Flood Recovery Money £4m

So what has been achieved?

Under a PSCA, LMDB undertook to lead the project to desilt the river (£1.25m).











Bank strengthening works

- Managed by LMDB under a PSCA
- Circa £2.2m across four main rivers



Conclusion

- Where next?
- What have we learned?
- Will we be allowed to apply it?

How are we going to go about it?



River Idle



River Devon



Lindsey Marsh Drainage Board

Keeping our rivers flowing