

ENVIRONMENT
DAY 2026



INTegrated WATER MANAGEMENT
Revai Kinsella
Area Manager
Pevensey & Cuckmere
Water Level Management Board

SPONSORED BY





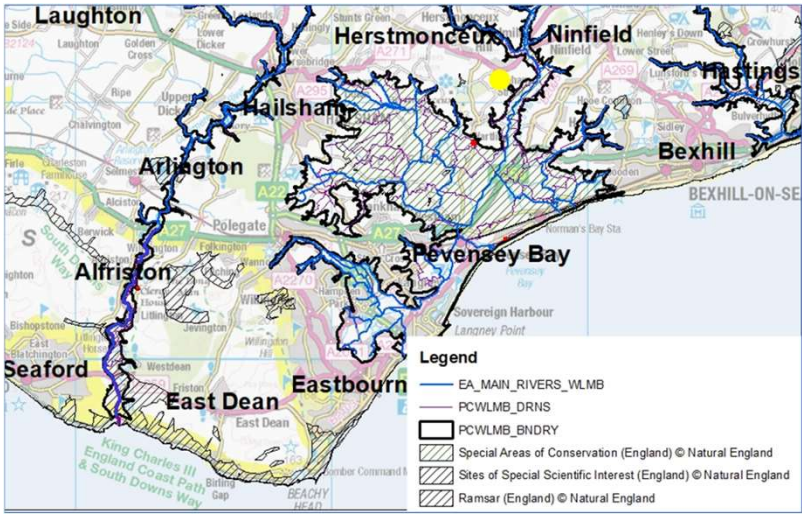


Reimagining Our Approach to
Water Level Management

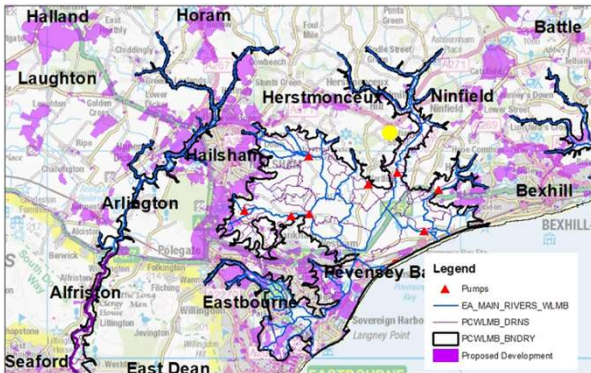
Revai Kinsella
February 2026



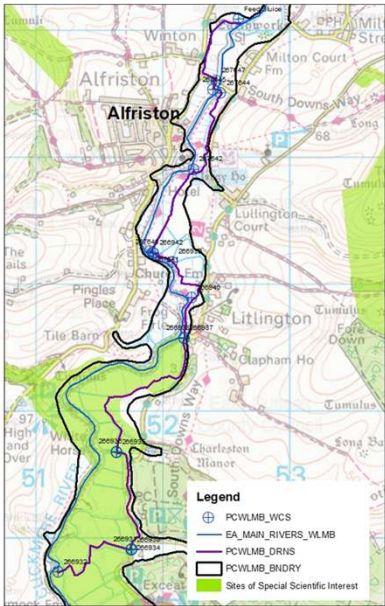
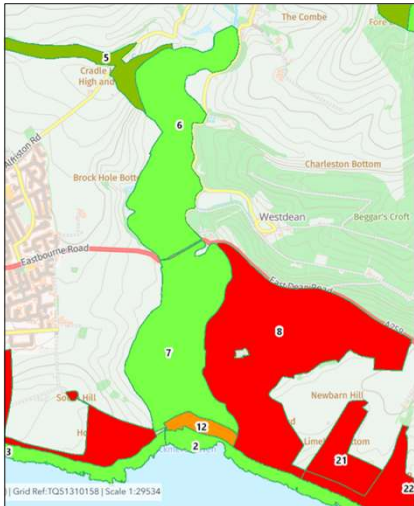
Pevensey and Cuckmere District



Challenges – Present & Past



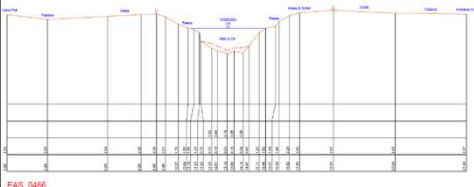
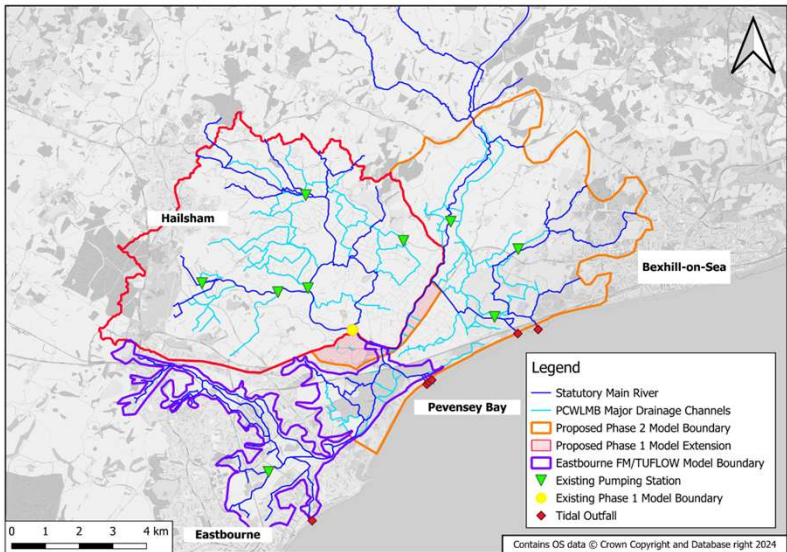
Unlocking Solutions - Cuckmere



Autumn 2022 to
Summer 2023

- Wintering birds survey
- Breeding birds survey
- Botanical survey
- Invertebrate survey
- Salinity testing

Unlocking Solutions - Pevensey





Perfect Timing – IDB Fund




Tranche 2 – Milton Lock



Tranche 2 – Tilting Weirs



Depth (m)	Thickness (m)	Soil Type	Description
GL – 0.2	0.2	Topsoil	Grass over greyish brown to brown, silty, sandy, slightly gravelly CLAY with frequent rootlets.
0.2 – 0.4	0.2	Made Ground	Firm brown and pale grey mottled yellow, silty, sandy, gravelly CLAY. Gravel comprises chalk, brick and flint.
0.4 – 1.4	1.0	Alluvium	Soft to firm, greyish brown mottled orange, silty sandy gravelly CLAY with a light organic odour.
1.4 – 3.8	2.4	Alluvium	Very soft, organic, grey to dark brown, silty sandy gravelly CLAY with a light organic odour.
3.8 – 5.1	1.3	Peat	Soft, organic, dark brown to black, silty fibrous to pseudo fibrous PEAT with a light organic odour.
5.1 – 6.2	1.1	Alluvium	Very soft, organic, grey to dark brown, silty sandy gravelly CLAY with a light organic odour.
6.2 – 12.5	4.1	Weald Clay	Firm to stiff, fissured, yellowish brown mottled bluish grey, silty CLAY
12.5 – 20.0+	7.5+	Weald Clay	Stiff to very stiff, thinly laminated, grey, silty CLAY.



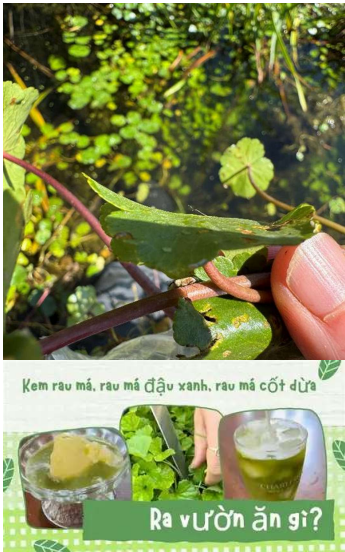
What about Pennywort?



Mechanical Removal – 2019/20



Biocontrol – going forwards



Lessons Learnt



Have conversations and listen with understanding



Importance of building strong relationships and partnerships



A team with the right skills and teamwork

What Comes Next?



Started work on the Cuckmere Adaptation Strategy with our partners



Continue working towards better water level management on the Pevensey Levels



Work with farmers and landowners to take opportunities to store water on the Pevensey Levels



Where we can, allow any future replacement of our pumps to help water storage

End

